



Manufacturer of
TOMCAT II-A & ADD-A-CAT II-A
Totally Outperforms Magnesium

- Solar power supplies for cathodic protection
 - Systems built for your applications
 - 1 year warranty

Detailed Installing Instructions

- The following slides show in-depth how to properly install a TOMCAT II-A



Installing a TOMCAT II-A unit

- TCII-A mounts to any 1.5” pole and comes with 2 pieces of aluminum angle mounted on the back of the unit



Installing TC II-A

- There are 2 bolts running through the aluminum angle.



Installing TC II-A

- The top bolt is used to mount your TCII-A and the bottom bolt will rest against your pole to establish the tilt angle for your unit



Installing TC II-A

- Your TCII-A should face due south and have full exposure to the sun from sunrise to sunset



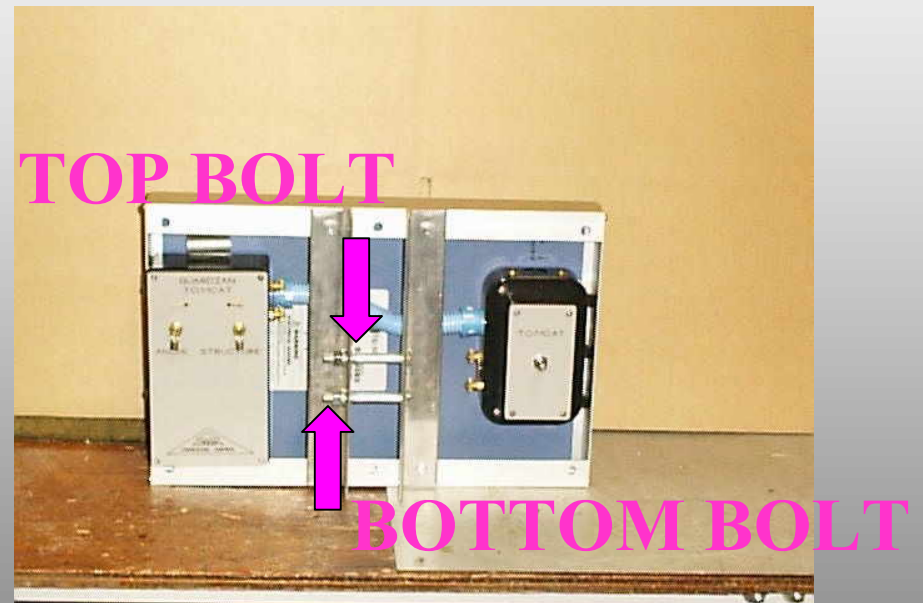
Installing TC II-A

- To mount the unit you will need to drill a hole through your mounting pole 1" from the top running east to west



Installing TC II-A

- Remove the top bolt and loosen the bottom bolt



Installing TC II-A

- Slide the pole between the 2 pieces of angle until the mounting holes match up with the holes in your pole



AREA FOR POLE

Installing TC II-A

- Place mounting bolt through the mounting hole



Installing TC II-A

- Tilt your panel until the bottom bolt rest against your mounting pole and tighten the top bolt, then tighten the bottom bolt



Installing TC II-A

- With the terminal clips provided with the TCII-A connect your structure wire and your anode leads to the unit



Installing TC II-A

- Your TOMCAT II-A unit is now installed
- Next follow the five step testing procedures and installation is complete



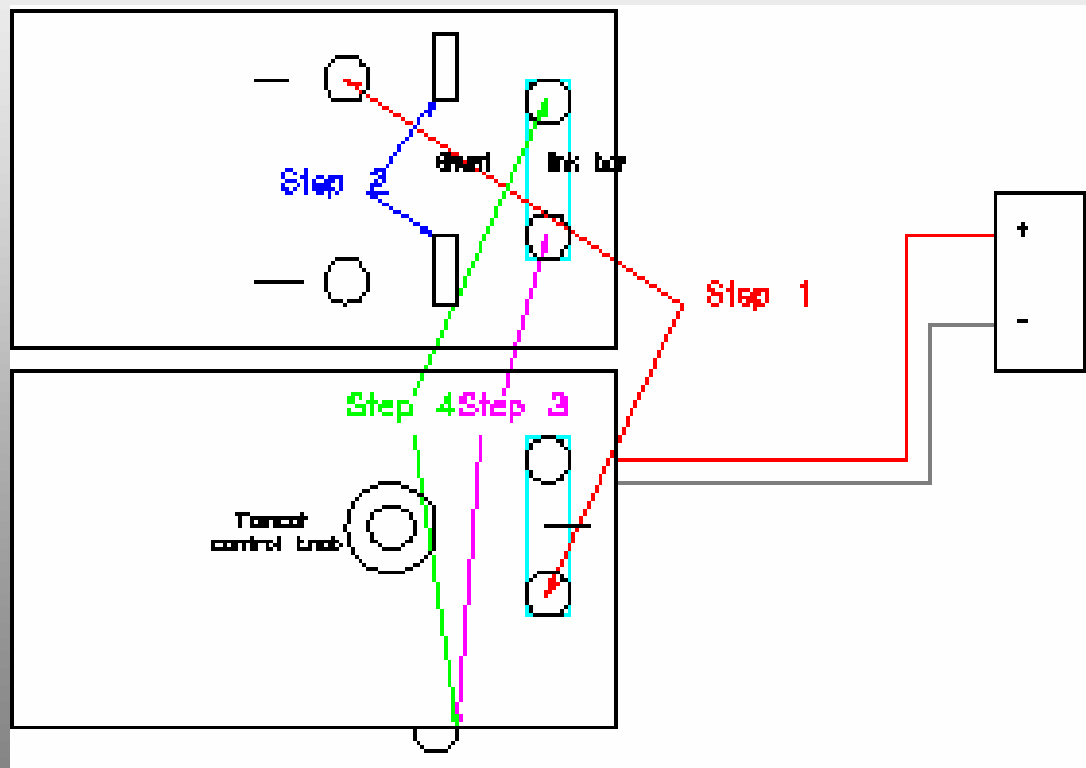
Detailed Testing Procedures



- The following slides show a step by step approach on how to test a TOMCAT II-A

TOMCAT II-A
with
ADD-A-CAT II-A

TOMCAT II-A Testing Procedures



- TCII-A testing procedures cover three primary areas
 - Solar Panel
 - Regulator
 - Battery

Testing TC II-A



**TOMCAT II-A
with
ADD-A-CAT II-A**

- The best time to test will be from about 12 noon to 3 PM on a sunny day testing for the batteries fully charged condition.
- Testing is a simple five step process.

Step One: Solar Panel

- Remove the link bar from the bottom box.
- Test with a d/c voltmeter between screw where the link bar was removed on your solar panel box and the positive output lug on your regulator (you should read between 8 and 10 volts).

Step Two: Night Output

- With your link bar still disconnected on your solar panel box you should take a reading across your shunt.
- You should read between 450 to 500mA, adjust your TOMCAT control knob until this level has been achieved.

Step Two: Night Output

- If you can not achieve this level your ground bed resistance is to high and you will need to improve your ground bed unless your pipe to soil readings are at a satisfactory level.
- Take a pipe to soil reading, it will be at it's lowest level and should fall within your desired protection level.

Step Three: Battery

- Remove the link bar from the top box.
- Test with a d/c voltmeter between the bottom screw where the link bar was removed on the top box and the screw on the bottom of the bottom box (you should read between 3.5 and 4.4 volts).

Step Four: Regulator

- Reconnect the link bar on the bottom box.
- Disconnect your anode lead from your regulator.
- Test with a d/c voltmeter between the screw on the bottom box and the screw closest to the top of the solar panel where your link bar was removed on the top box (you should read between 4.6 and 5.2 volts).

Step Five: Pipe to Soil

- Reconnect the link bar on your regulator box and your anode lead and test your pipe to soil potential.
- Your pipe to soil potential should be at it's highest level and fall within your desired potential.

- Please call or e-mail
 - for more information
 - a price quote
 - place an order
- Additional presentations are available on
 - TOMCAT unit
 - Ground bed Placement



1490 South Doyle St.
Pampa, TX 79065
1-800-628-1333
(806) 665-1333 fax
angelab@gcctexas.com
scotts@gcctexas.com